

on-hand connect

# manual Version 1.2

## Table of contents

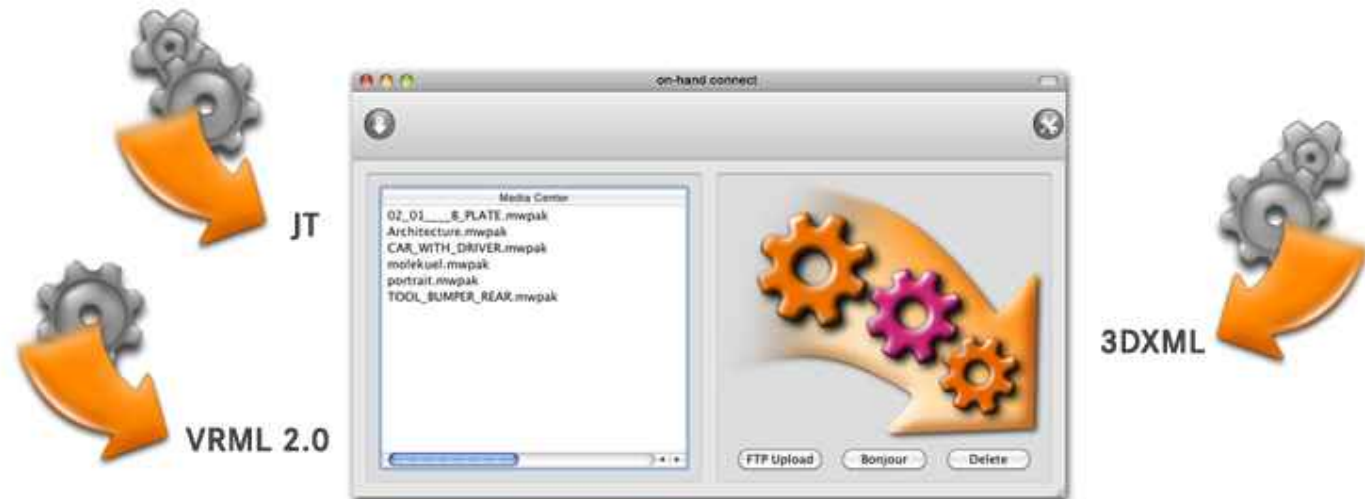
1. General	02
2. Converting files	02
3. Transfer of files via FTP	04
4. Transfer of files via Bonjour	05

## 1. General

On-hand connect was developed to assist you in the use of on-hand viewer / on-hand viewer XL.

It provides functions to convert files in the on-hand viewer format and to transfer these files to the device.

On-hand connect is available for Mac- and Windows-Systems. The handling is identically on both systems.



## 2. Converting files


The possible input formats are VRML 2.0, JT and 3DXML.

If the files contain textures, they have to be located in the same folder as the input file. On-hand connect converts the different formats in a format which on-hand viewer / on-hand viewer XL is able to handle. Additionally previews are created.

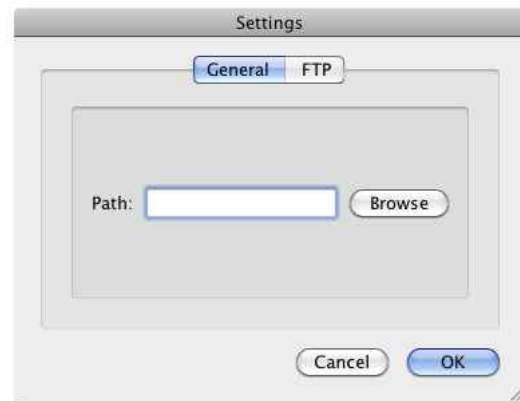
Please see figure (1) for detailed information about the accepted external file formats.

JT	VRML 2.0	3DXML
<p>We support at the moment JT version 8.0.</p> <p>In the JT format, we support structural and geometrical information, but no textures or edges.</p>	<p>In the VRML 2.0 format, we support all kind of geometrical information, but no animation.</p> <p>If you export a VRML file with textures, textures have to be external files, not embedded.</p>	<p>We support files exported with "XML tessellation" (available under CATIA MD2 licence).</p> <p>In the 3DXML format, we support geometrical and structural information as well as textures.</p> <p>Edges are supported as edges of the geometry, but not as design elements.</p>


(1)

Selection of button  :

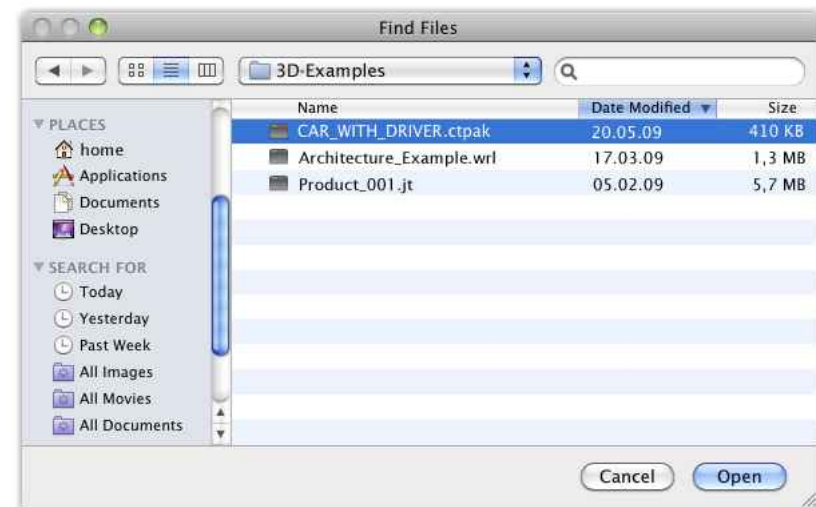
By selecting button "Browse" (2), provide a path to a directory where the converted files should be stored. If you don't give a directory here, the software will generate a new folder in your users home directory.



(2)

Selection of button  :

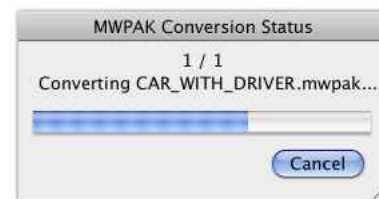
A dialog opens and provides the possibility to browse through the file system and to select the desired files (3). The files will be converted (4) and are visible in the Media Center (5) now.



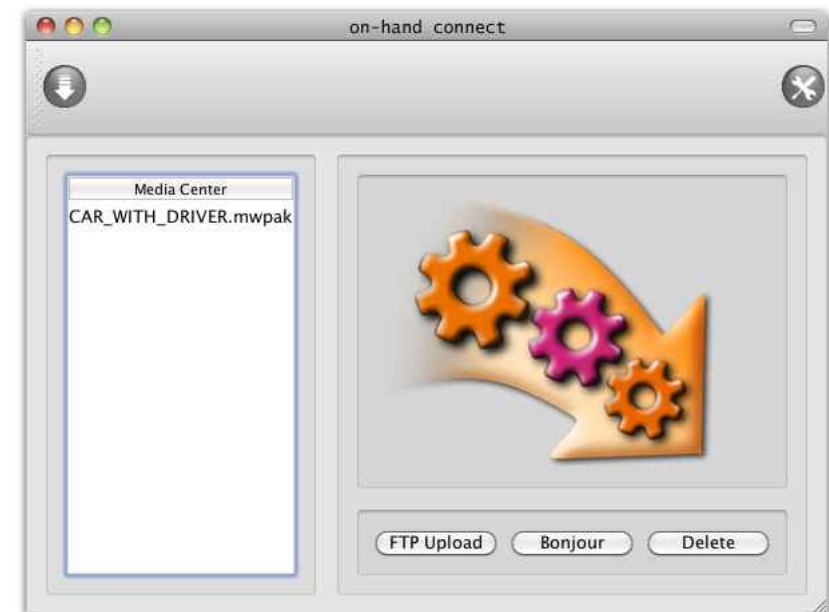
(3)

Selection of button  :

The file(s) selected before in the Media Center will be deleted.



(4)




(5)

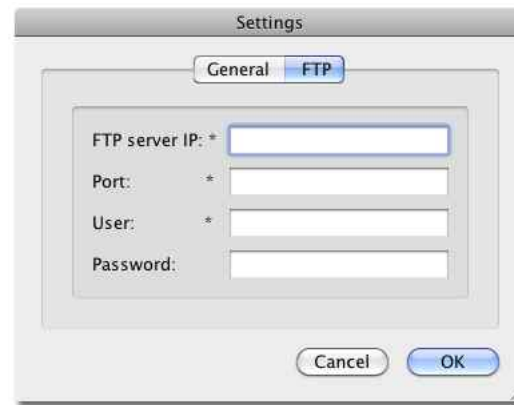
### 3. Transfer of files via FTP

On-hand connect assists the transfer of files via FTP and Bonjour.

Files uploaded to a (own) FTP server can be downloaded with the FTP client integrated in on-hand viewer / on-hand viewer XL.

Selection of button  :

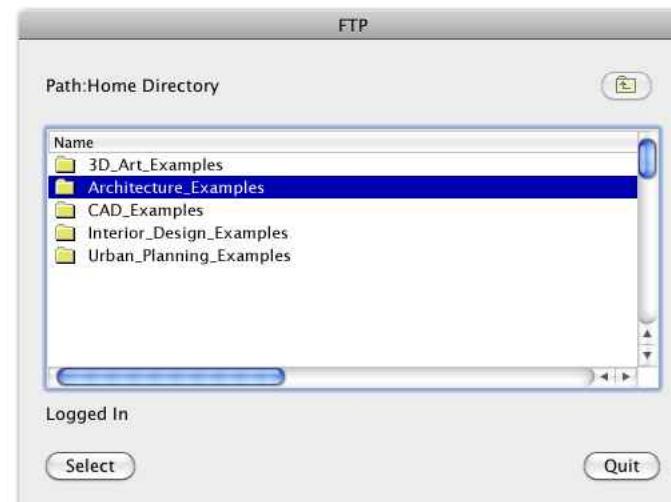
Opens the settings dialog in which the access data of the FTP server can be defined. The fields marked with \* are required (6).



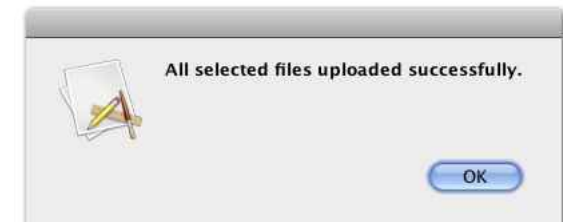
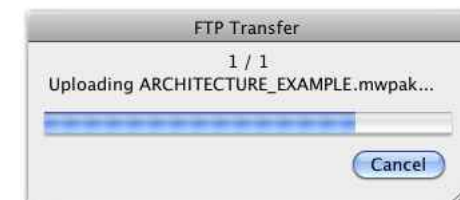
(6)

Selection of button  :

An "FTP" dialog opens and shows the files and folders of the FTP server from which the access data was defined in the settings (7). The desired FTP folder can be selected and the files marked in Mediacyber before are transferred to the FTP server (8).



(7)



(8)

#### 4. Transfer of files via Bonjour

Files can be transferred from the Bonjour client who is integrated in the on-hand connect to the on-hand viewer / on-hand viewer XL integrated Bonjour server.

Selection of button  :

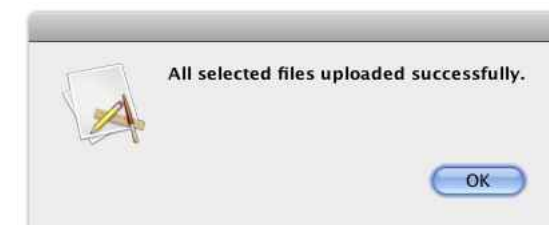
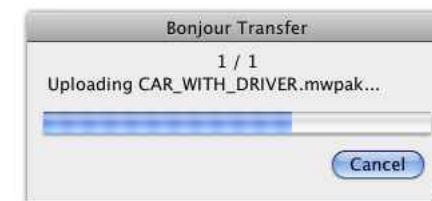
A dialog opens in which all reachable Bonjour servers are visible (9).

Selection of button  :

The files marked in Mediacenter before are transferred to the device selected in the "Bonjour" dialog (if the device user confirms the transfer) (10).



(9)



(10)